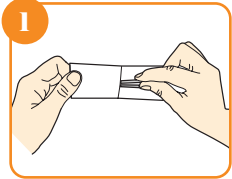
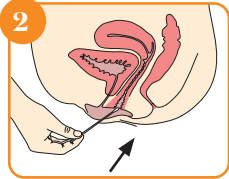


How to take the swab

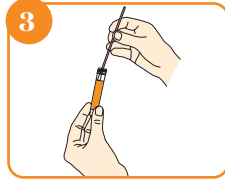
1 Sample Kit 2 & Sample Kit 3



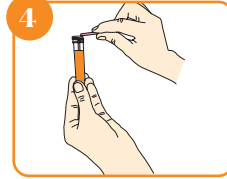
Remove contents from 'Sample Kit 2' bag. Remove the swab with the pink stick from the paper packet. **Be careful not to touch the cotton end.**



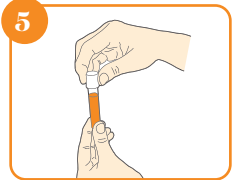
Hold the swab near the scored line (the black line on the stick of the swab), carefully insert the swab about two inches into your vagina, and turn it gently touching the walls for 5-10 seconds. **Be careful to remove it without touching the rest of your body.**



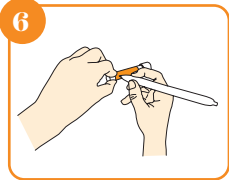
Whilst holding the swab, unscrew the cap from the tube with the orange label and immediately place the swab all the way into the tube. **Do not pierce the foil cap of the lid and take care not to spill the fluid in the tube.**



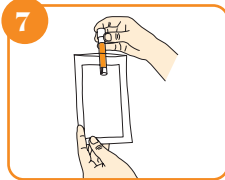
Carefully break the swab stick against the side of the tube at the scored black line and discard the top portion of the swab stick.



Screw the lid back onto the tube tightly.



Attach one of the peel off labels onto the tube. If the label is blank please write your patient ID (front of sample box) and date of birth onto the label. Labels can be found in the sample box.



Once you have taken your sample and labelled it, place it in the clear plastic bag containing the absorbent pad and seal it according to the instructions on the bag. **After taking your samples, please wash your hands.**

For more information on the DEVA study and how to take your study samples please visit www.devastudy.ac.uk



Instructions for taking your DEVA study samples

The DEVA study is comparing a non-antibiotic treatment (dequalinium chloride) with current standard antibiotics for the treatment of bacterial vaginosis (BV).

The testing kits enclosed are to be used to collect your samples for the DEVA study. The taking and returning of these samples is important for the study as they will be used to find out if the non-antibiotic treatment is as good as the usual antibiotic treatments in treating BV.

Before you start

If you are taking your eligibility samples for the study, to check you are suitable to join, you should have been sent an orange sampling box. If you are taking your Week 4 sample(s) you should have been sent a purple sampling box. Before you start to take any samples please read these instructions in full. The boxes contain everything you need to take your vaginal samples for the DEVA study and send them to the study team.

What you need:

- Orange or purple cardboard box (for return postage of your sample – do not throw away)
- Peel-off labels
- Sample Kit 1
 - Swab with the white stick
 - Plastic box containing a glass slide
- Sample Kit 2 / Sample Kit 3
 - Swab with pink sticks
 - Orange tube pack (Aptima tube)
 - Clear plastic bag containing an absorbent pad

YOU WILL HAVE TWO SAMPLE KITS IN YOUR ORANGE BOX (THREE SAMPLE KITS IF YOU AGREED TO TAKE PART IN THE SUB-STUDY) AND ONE SAMPLE KIT IN YOUR PURPLE BOX (TWO SAMPLE KITS IF YOU AGREED TO TAKE PART IN THE SUB-STUDY).

i If you are missing any of the above or require any items replacing please email the DEVA team on deva@nottingham.ac.uk

You will need to take the samples as follows:

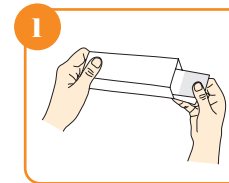
- **SAMPLE 1**
 - A swab from your vagina smeared onto a glass slide.
- **SAMPLE 2 (AND SAMPLE 3 SUB STUDY)**
 - A swab from your vagina placed into a plastic tube.

Please wash your hands before taking your samples and write the date you took your samples on the front of the boxes.

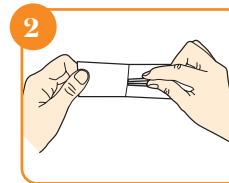


How to take the slide swab sample

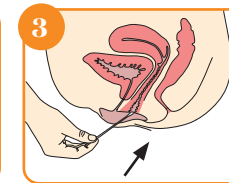
i Sample Kit 1



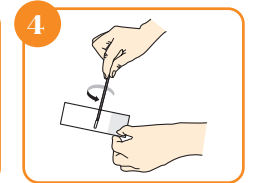
Remove contents from 'Sample Kit 1' bag. Open the plastic box containing the glass slide. Remove the glass slide and place the slide on a flat surface.



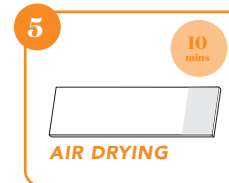
Remove the swab from the paper packet (use the white stick). **Be careful not to touch the cotton end.**



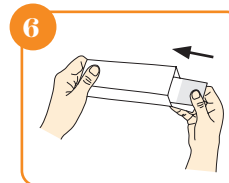
Carefully insert the swab into your vagina about two inches and turn it gently touching the walls for 5 to 10 seconds. **Be careful to remove it without touching the rest of your body.**



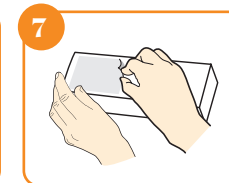
Immediately after withdrawing the swab, **gently** slide the cotton tip from side to side in a zigzag only once along the length of the slide creating a thin smear. **Take care not to break the glass by pressing down too hard.** Should the glass slide break, dispose of it in general household waste*. Dispose of the swab.



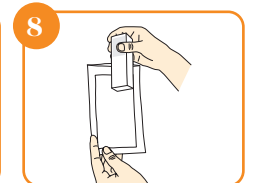
Allow the glass slide to air dry on the flat surface for 10 minutes (while you are taking your other swab(s).



After 10 minutes, carefully return the slide to the clear plastic slide holder and close.



Attach one of the peel off labels onto the slide holder. If the label is blank please write your patient ID (front of sample box) and date of birth onto the label. Labels can be found in the sample box.



Place back inside 'Sample Kit 1' bag.

* Please contact the DEVA team at deva@nottingham.ac.uk to request a new kit



Scan and watch

Scan this code with your smartphone QR reader for more information on how to take your study samples.